



MONTHLY MEMBERSHIP PROGRESS REPORT

District 3 L

Results as of: 3/31/2015

GMT: HAL GRIFFIN

LOCATION OKLAHOMA

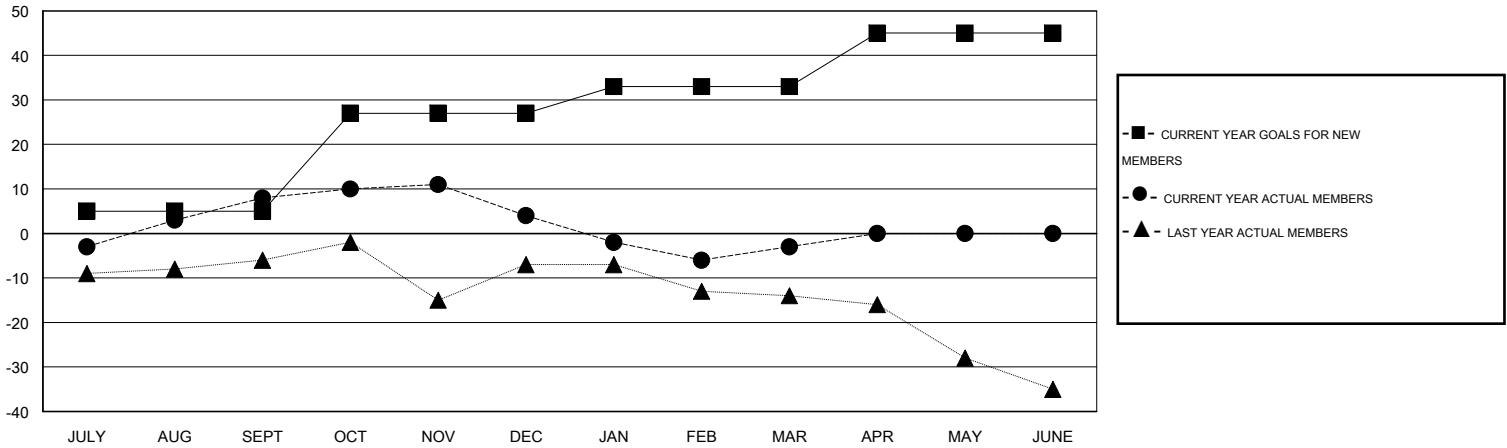
GMT CA 1

| Clubs | | | | | Members | | | | |
|-----------------------|---------------|-----------|---------------|---------------|-----------------------|-----------------|-------------------------------|-----------------|---------------|
| RESULTS FOR 2014-2015 | | | | | RESULTS FOR 2014-2015 | | | | |
| QUARTER | NEW CLUB GOAL | NEW CLUBS | DROPPED CLUBS | NET GAIN/LOSS | QUARTER | NEW MEMBER GOAL | CHARTER AND NEW MEMBERS ADDED | DROPPED MEMBERS | NET GAIN/LOSS |
| JULY/AUG/SEPT | 0 | 0 | 0 | 0 | JULY/AUG/SEPT | 5 | 24 | 16 | 8 |
| OCT/NOV/DEC | 1 | 0 | 0 | 0 | OCT/NOV/DEC | 22 | 24 | 28 | -4 |
| JAN/FEB/MAR | 0 | 0 | 0 | 0 | JAN/FEB/MAR | 6 | 18 | 25 | -7 |
| APR/MAY/JUNE | 0 | 0 | 0 | 0 | APR/MAY/JUNE | 12 | 0 | 0 | 0 |

GOALS AND ACTUAL NEW CLUBS CUMULATIVE



GOALS AND ACTUAL MEMBERS CUMULATIVE



| | | | |
|------------------------|---|----------------------------|---------------------|
| DROPPED CLUBS: 0 | 27 CLUBS OF 36 ADDED 1 OR MORE NEW MEMBERS | <u>GENDER DISTRIBUTION</u> | |
| | | MALE | 542 (68.18%) |
| <u>DROPPED MEMBERS</u> | CLICK HERE FOR HEALTH ASSESSMENT DATA | FEMALE | 253 (31.82%) |
| DECEASED | | 8 | FAMILY UNIT MEMBERS |
| CLUB CANCELLED | 0 | HEAD OF HOUSEHOLD | 56 |
| OTHER | 61 | NON-HEAD OF HOUSEHOLD | 57 |
| TOTAL | 69 | | |